

Riccardo Piacentini





*Sublimine*


per clarinetto basso e percussioni (1 percussionista)


Organico: clarinetto basso (1)  
 { 2 piatti sospesi (2)  
 { tam-tam medio (3)  
 3 temple-blocks acuti (o wood-blocks) (4)  
 6 tom-toms (o 2 bongos e 4 tom-toms) (5)  
 { xilomarimba (6)  
 { vibrafono (7)

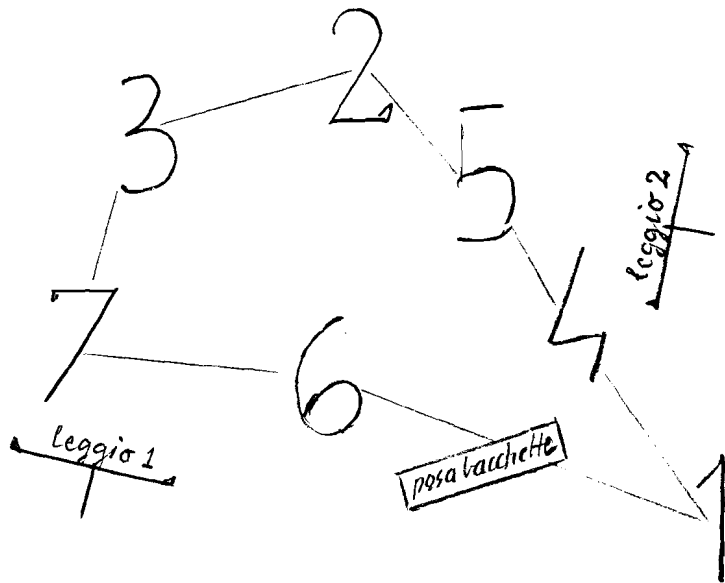
 bacchette dure

 bacchette medie

 bacchetta sinistra morbida  
 bacchetta destra dura

 8<sup>va</sup>  
 estensione necessaria

 estensione necessaria



E' indispensabile, per gli interpreti, leggere sulla partitura completa.

Le alterazioni valgono per la sola nota davanti a cui sono posti, eccetto nel caso di note ribattute.

durata 9'30"

♩ 96  
CL.B.

*port.* *[ten. lunga]* *poco leg., brillantissimo, precipitato*

TAM-TAM *[medio]*

*l.v.* *l.v.* *l.v. a lungo!*

4" 2.5"

CL.B.

*sempre fff* *slap* *slap*

TAM-TAM

*l.v.*

4"

CL.B. *full* **196**

*f* **fff** **3**

(TAM-TAM)

*lv.* *lv. a lungo!*

2.5"

(CL.B.)

(div.) MAR. **f** **fff**

VIB. **fff**

(MAR.)

CL.B.

MAR.

VIB.

MAR.

glisse tasti neri  
glisse tasti bianchi

tutto molto f

fff sost.

[brem.]

CL.B.

fff sost.

MAR.

tasti neri

tasti bianchi

fff / solo l'accecatura

allarg.

CL.B. *[sempre allarg.]*

ten. 4"

clck

196

medie

VIB.

MAR.

clck

M12

CL.B. /slaps/

VIB.

pp!

MAR.

con i polpastrelli

ripetere rapido

clck

ord. /slaps/

Handwritten musical score for CL.B. and MAR. instruments. The CL.B. part includes markings for *tr amara*, *slaps*, and *ppp*. The MAR. part includes *stappare il suono\** and *ppp con i feltri (non più con i palpastrelli)*. A tempo marking of 112 is present. The score is written in 2/8 time.

\*ossia: bloccare la risonanza del suono

Handwritten musical score for CL.B. and MAR. instruments. The CL.B. part includes *sempre ppp* and *ord.* markings. The MAR. part includes *stop* and *sempre ppp* markings. A tempo marking of 112 is present. The score is written in 2/8 time.

non uscire.

80 circa, asincrono

CL.B.

Handwritten musical notation for Clarinet B (CL.B.) in 2/4 time. The notes are marked with accents and slurs. The instruction "non crusc." is written below the staff.

Handwritten musical notation for Clarinet B (CL.B.) in 2/4 time. It features a 10-measure phrase with a 2/5-2/5 rhythm pattern, marked "etc., ma più libero". The dynamic marking *pp* is present.

MAR. (stappare)

Handwritten musical notation for Maracas (MAR.) in 2/4 time. It includes a 9-measure phrase marked "non stoppare" and "etc., ma più libero". The dynamic marking *pppp con i feltri* is written below the staff.

CL.B.

Handwritten musical notation for Clarinet B (CL.B.) in 2/4 time. The notation includes various slurs, accents, and dynamic markings such as *mf* and *me.*

MAR.

Handwritten musical notation for Maracas (MAR.) in 2/4 time. The notation consists of rhythmic patterns with dynamic markings such as *mf* and *me.*



*(CLB.)*

*tr*

*circa 4"*

*pp sub. persistente*

*MAR.*

*tr*

*pp sub. persistente*

*(CLB.)*

*tr*

*tr*

*tr*

*4"*

*A 2.5"*

*5"*

*pp*

*VIB.*

*pp, motore acceso*

*dim. col cl. b.*

*MAR.*

CL.B. /

VIB. /

8"

meta' suono intonato e meta' soffio

stacc., rapido

pppp / appena permissibile /

stop

TAM-TAM

lv.

p, con le nocche

lv.

CL.B. /

VIB. /

7.5"

pppp /

VIB

pppp, motore acceso

TAM-TAM

lv.

p, con le nocche

CL.B.

15"

VIB.

TAM-TAM

p, con le nocche

6 TOM-TOMS

12"

pppp con i polpastrelli, senza bacchi, poco cresc.

112-138

rapidiss. ad lib., quasi cadenza

mp

3 T.BL.

(senza bacchi)

mp

6 TOMS



# 138

3 T.B.L.  
6 TOMS

*mf*

*mf*

## 2 PT. S.

3 T.B.L.  
6 TOMS

*mf*

*cresc.*

*lv.*

*mf*

*cresc.*

*mf*

CL.B.  $\text{♩} = 96$

lunga quanto basta  
 ( ) al percussionista

glissé

MAR.  $\text{♩} = 96$

$3 \frac{1}{5}$ "

f col marico

prendere le bacchette  
 il più rapidamente pos.

stingere / e sempre cresc.

2 PT.S.

3 T.BL.

6 TOMS

l.v.

l.v.

l.v.

CL.B. *glisse/lento*  $\Delta$   
MAR. *ff*  
*glisse*  $\Delta$   
*glisse*

CL.B. *full* *slap* *slap* *slap* *slap*  
MAR.  
VIB. *motore spento*  
*ff ord., molto sonoro*

CL.B. / VIB.

slap

port. ten

fff

l.v.

l.v.

ff

ped. abbassato

CL.B. / VIB.

tr

fff

l.v.

l.v.

fff

fff

ped. abbassato

112

CL.B. / accel.

trance

Handwritten musical score for the first system. The top staff is in treble clef and contains a melodic line with notes and slurs. The bottom staff is in bass clef and contains dense, rhythmic chordal textures. Annotations include "trance" above the top staff, "ff, aggressivo" below the bottom staff, and "slaps" written above and below the bottom staff. A dashed line indicates an acceleration ("accel.") starting from the beginning of the system.

VIB.

l.v.

l.v.

Two empty musical staves. The top staff has a vibrato marking "VIB." and a dynamic marking "l.v.". The bottom staff also has a dynamic marking "l.v.". The staves are otherwise blank.

tra 20 e 40

CL.B.

slaps

slaps

Handwritten musical score for the second system. The top staff is in treble clef and contains a melodic line with notes and slurs. The bottom staff is in bass clef and contains dense, rhythmic chordal textures. Annotations include "CL.B." above the top staff, "slaps" written above and below the bottom staff, and "sempre ff" below the bottom staff. A dashed line indicates a dynamic marking of "pp" at the end of the system.

CL.B. < ppp subito, cantato e suonato

[suonato]

sub ————— li —

[cantato]

Handwritten musical score for the third system. The top staff is in treble clef and contains a melodic line with notes and slurs. The bottom staff is in bass clef and contains notes and slurs. Annotations include "CL.B." above the top staff, "ppp subito, cantato e suonato" above the bottom staff, and "sub li" written across both staves. A dashed line indicates a dynamic marking of "pp" at the end of the system.



CL.B. *[suonato]*

*[colpo di chiavi]*

*[ppp]*

*[cantato]* mi

sub — li

CL.B.

*[grande respiro]*

sub — li — mi

MAR. *8<sup>a</sup> sopra*

*trem. rapido, eco*

*ppp*

TAM-TAM *lv.*

*pppp con i polpastrelli*

Handwritten musical score for the first system, featuring three staves:

- Top Staff:** Labeled *CL.B.* (Clavicembalo). It contains a few notes and a clef.
- Middle Staff:** Labeled *MAR.* (Mandolino). It contains a long horizontal line with the word *ne* written above it.
- Bottom Staff:** A grand staff (treble and bass clefs). It contains some notes and rests.

Annotations include a double bar line with a cross above it at the end of the top staff, and a measurement of *2"* between two vertical dashed lines.

Handwritten notes in a box:

- \*  $\cap$  = circa 4"
- $\Delta$  = circa 25"

Handwritten musical score for the second system, featuring a grand staff and a CL.B. staff:

- Grand Staff:** Labeled *MAR.* It contains a complex melodic line with many notes, some marked with *[papp]* and *[trem.]*. There are also *sf* (sforzando) markings.
- CL.B. Staff:** Labeled *CL.B. soli colpi di chiave*. It contains several chords and notes, some marked with *sf*.

Annotations include a *capicord.* marking above the grand staff, a *low* marking above the CL.B. staff, and various dynamic and performance markings like *[papp]*, *[trem.]*, and *sf*.

CL.B. / soli colpi di chiave

MAR.

Musical score for the top system. It includes a piano part with a treble clef and a maracas part with a bass clef. The piano part has several measures with notes and rests, some marked with 'A' and 'trem.'. The maracas part has rhythmic patterns with 'sf' (sforzando) markings. There are also some handwritten notes and symbols like 'X' and 'V'.

tra 20 e 40

[rumori di chiavi]

CL.B. / soli colpi di chiave

MAR.

Musical score for the bottom system. It features a piano part, a maracas part, and a vocal line. The piano part has notes and rests, with 'trem.' and 'ppp' markings. The maracas part has rhythmic patterns. The vocal line has lyrics: 'te annunziata', 'sub', 'li', 'mi'. There are also performance instructions like 'ppp', 'suonata', 'cantato', and '8<sup>a</sup> sordina'. The system is divided into measures by a vertical line labeled 'CL.B.'.

*tempo come prima, rapidiss. quasi trem*

*leg. non scala crom*

Handwritten musical score for the first system, featuring three staves. The top staff is marked **CLB.** and contains a complex melodic line with many slurs and ties. Above it are two groups of four asterisks (\*\*\*\*). The middle staff is marked **MAR.** and contains a bass line with some notes and rests. The bottom staff is marked **CLB.** and contains a bass line with some notes and rests. The score includes dynamic markings such as *p*, *pppp*, and *sf*. There are also performance instructions like *leg.*, *non scala crom*, and *soli colui di chiave*. A large bracket on the right side of the system is labeled **CLB.**

*stacc. non scala crom etc.*

Handwritten musical score for the second system, featuring three staves. The top staff is marked **CLB.** and contains a complex melodic line with many slurs and ties. Above it are two groups of four asterisks (\*\*\*\*). The middle staff is marked **MAR.** and contains a bass line with some notes and rests. The bottom staff is marked **CLB.** and contains a bass line with some notes and rests. The score includes dynamic markings such as *p*, *sf*, and *mi.*. There are also performance instructions like *stacc.*, *non scala crom etc.*, and *sub!*. A large bracket on the right side of the system is labeled **CLB.**

CLB. <

[non scala crom.]

8

13

19

mi!

mi mi mi re

19

[colpi di chiave]

[continua]

soffio senza intonazione

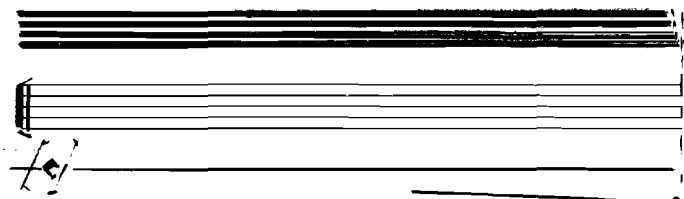
MAR.

112-138

6 TOM-TOMS

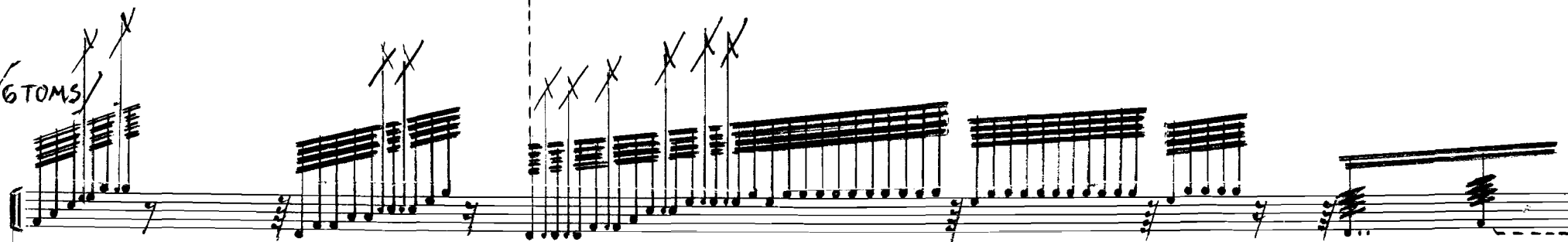
ppp, con i polpastrelli

*/c.b./*



*[spegnere]*

*/6 TOMS/*



*[tappa]*

6 TOMS/-

[almeno 8"]

Vercelli, 5/1/92

L'occasione di SUB LIMINE è stata  
 affetta dal DUO CONTEMPORAIN di  
 Rotterdam, a cui il brano va de-  
 dicato